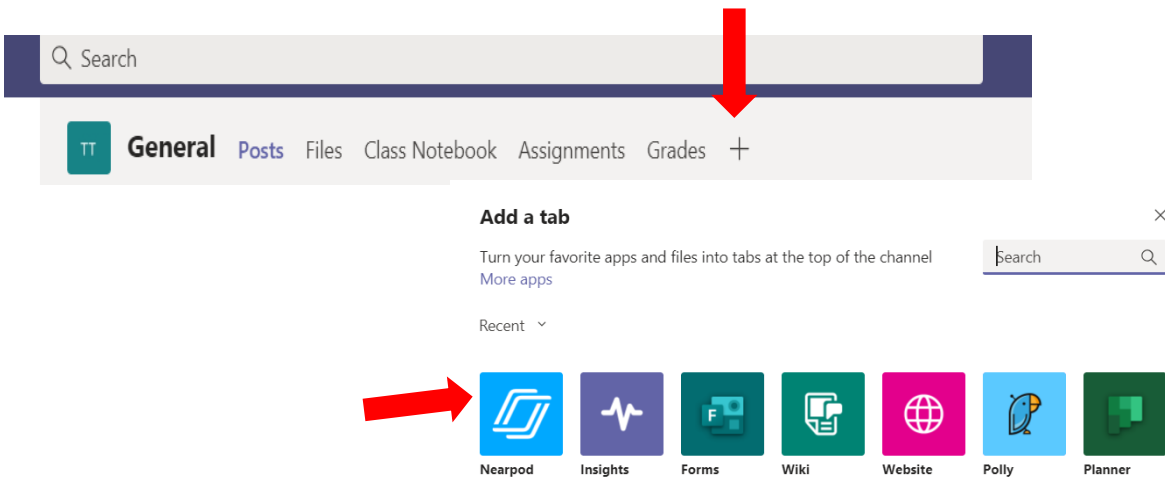
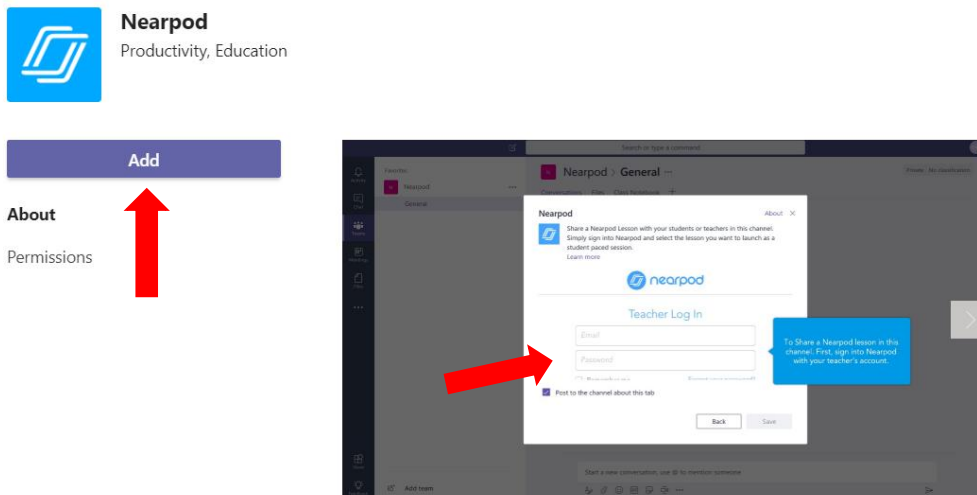


Using Nearpod with Microsoft TEAMS

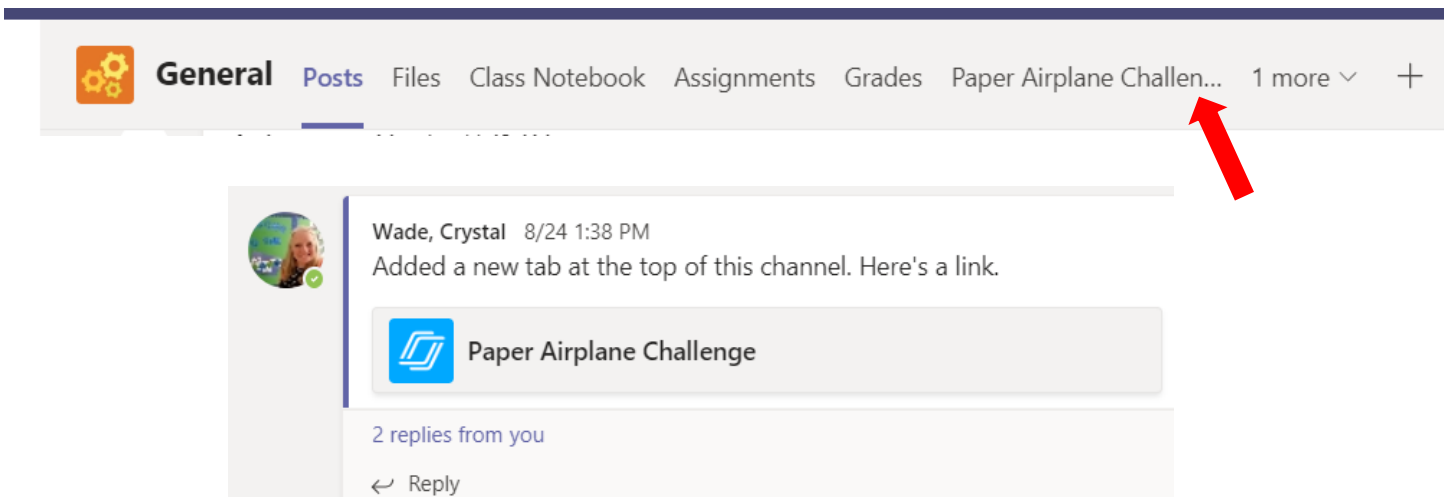
1. Click on the "+" sign at the top in the TEAM you want to add it to.



2. Select ADD and it will prompt you to login to your Nearpod account.

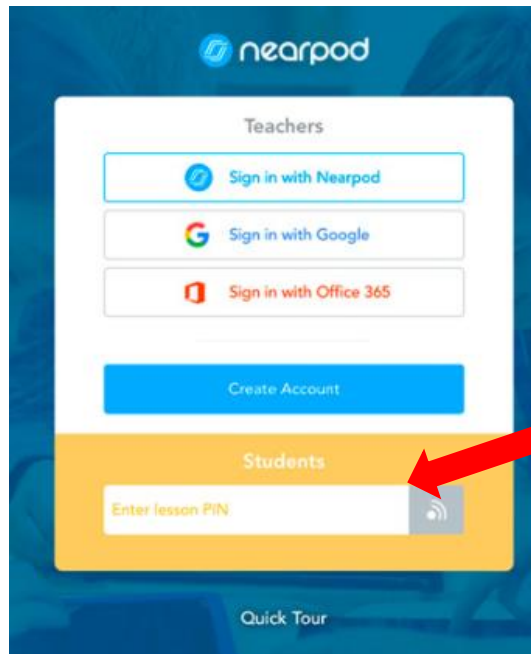


3. Select an existing **Nearpod** lesson inside of your personal library.
4. The lesson title will show up in two places in your TEAMS (at the top and as a post in the channel).



How do students access Nearpod lessons from APP or Website

<https://nearpod.com/student/>

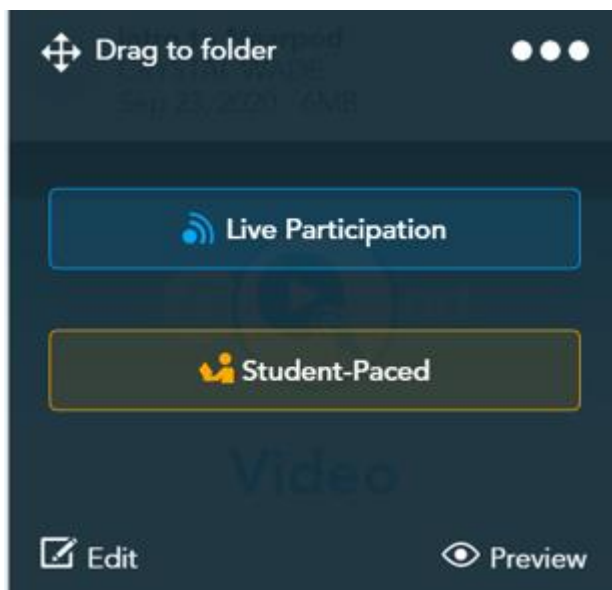


Give students
a CODE to enter.

How to get a code for students...

-Click on the lesson you want to do. Choose LIVE or STUDENT-PACED.

**Use CODE or Link.



Students join with this CODE at join.nearpod.com or in the app

VWZIE

